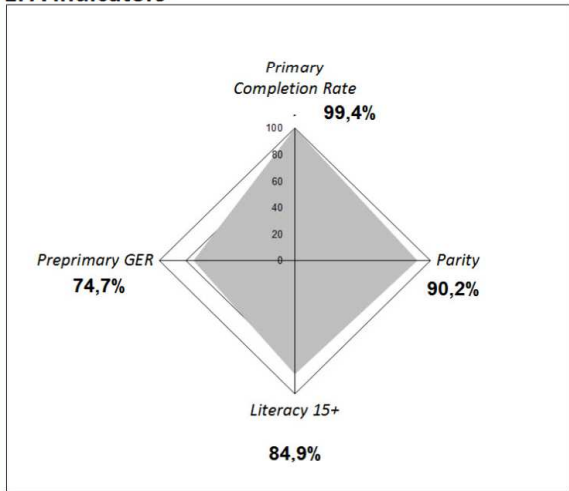


EFA African Development Index	83,6
Reminder 2000	81,4

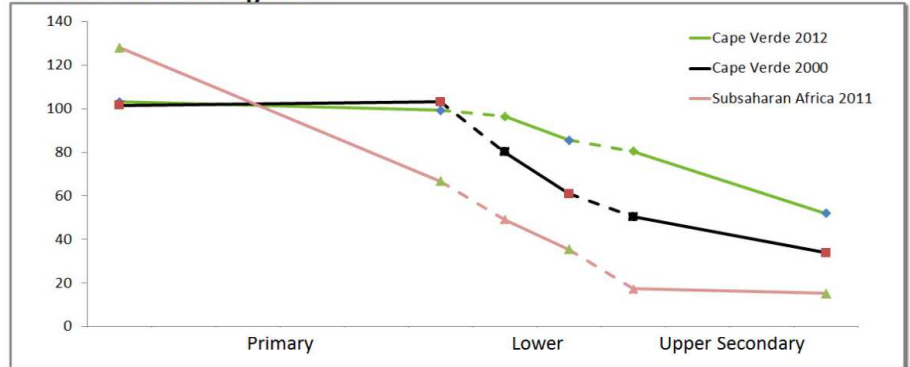
EFA indicators



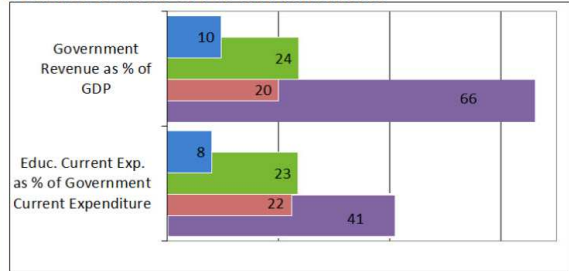
Demographic and Macroeconomic Context (2012)

GDP per Capita (U.S. \$)	3 773
Total population (000)	503
% of School Age Population (Primary)	11,7
Out of school rate for children of primary school age (%)	2,7
Adult (15-49) Living with HIV/AIDS	1,0%
HDI (Rank)	132/187

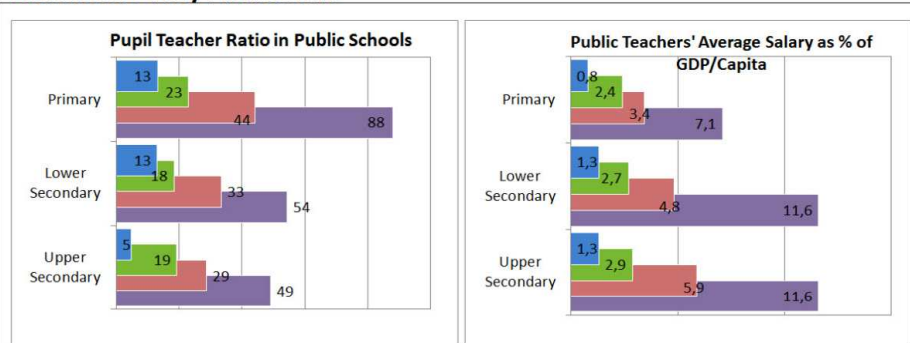
Transversal Schooling Profile



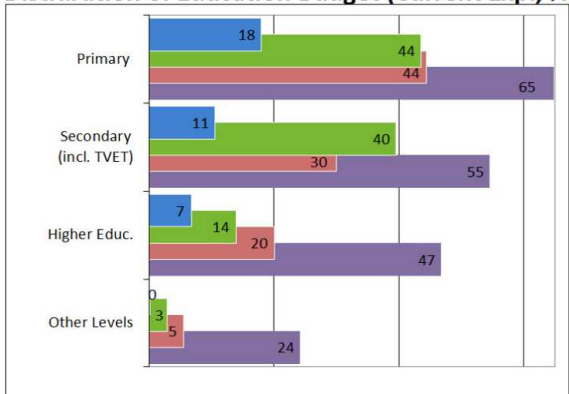
Domestic Resources Mobilisation



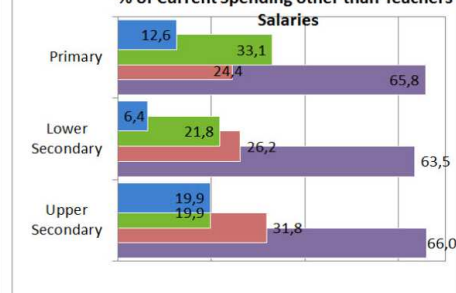
Education Policy Parameters



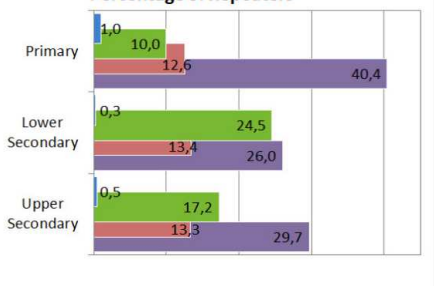
Distribution of Education Budget (Current Exp., %)



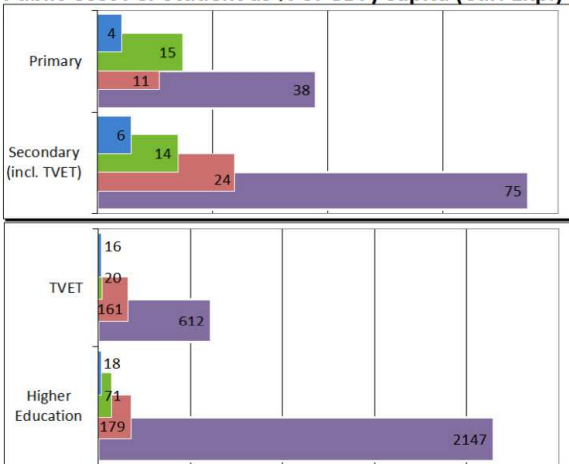
% of Current Spending other than Teachers' Salaries



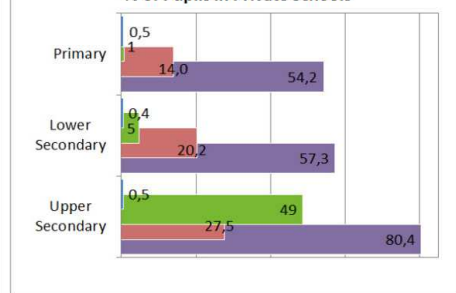
Percentage of Repeaters



Public Cost Per Student as % of GDP/Capita (Cur. Exp.)



% of Pupils in Private Schools



Legend

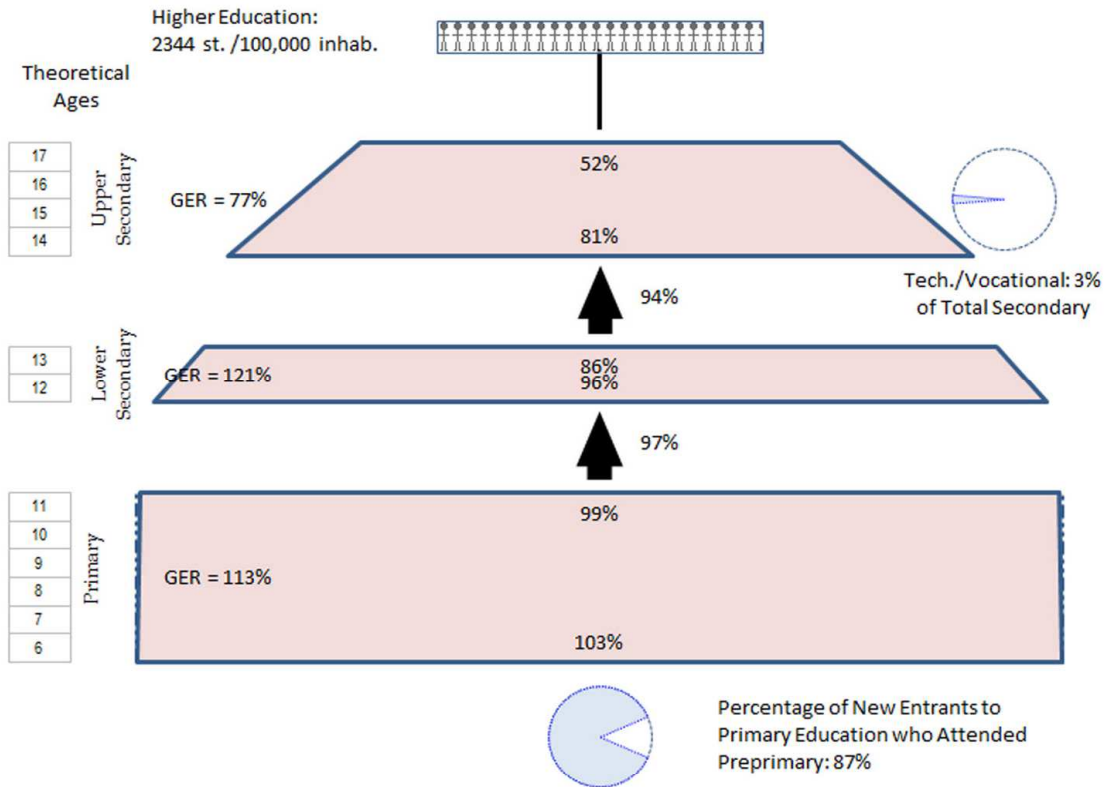


Year of Production of Financial Data

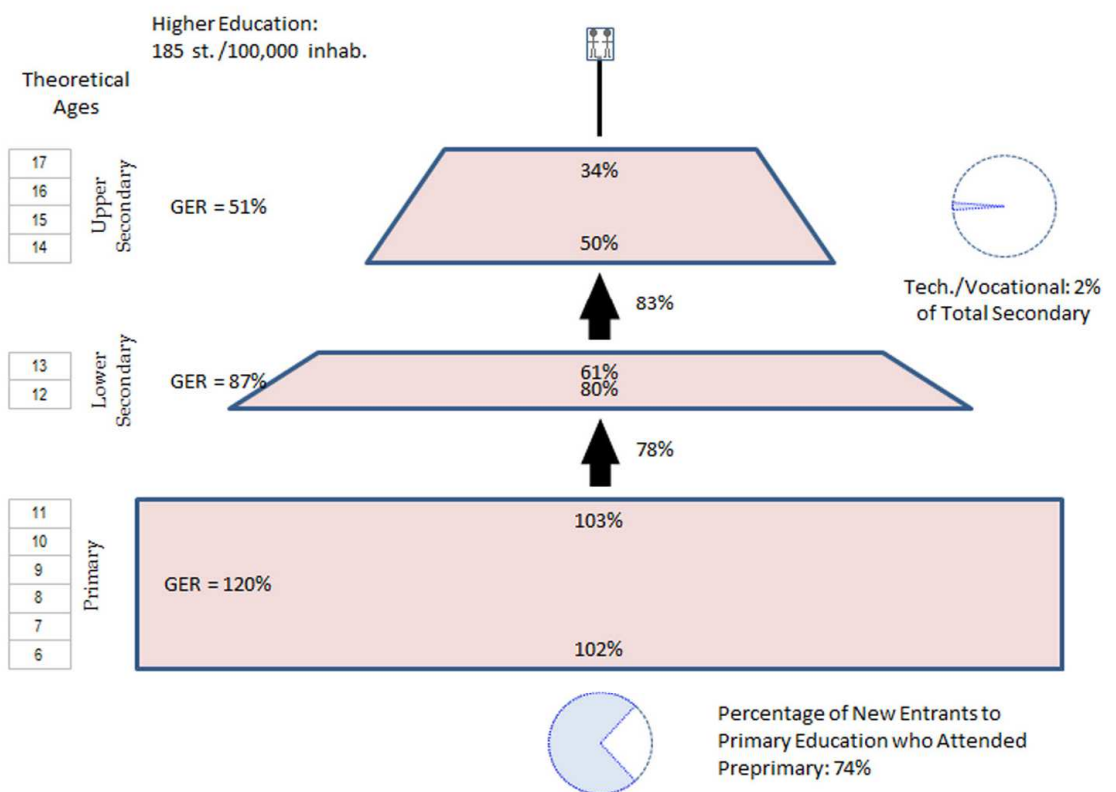
Domestic Resources Mobilisation	2010
Distribution of Education Budget	2009
Public Cost per Student as % of GDP per Capita (Current Exp.)	2011
Teachers' Salaries & other Current Spending	2009

Sources: Pôle de Dakar, UIS, World Bank, United Nations Population Division, UNAIDS, UNDP, IMF

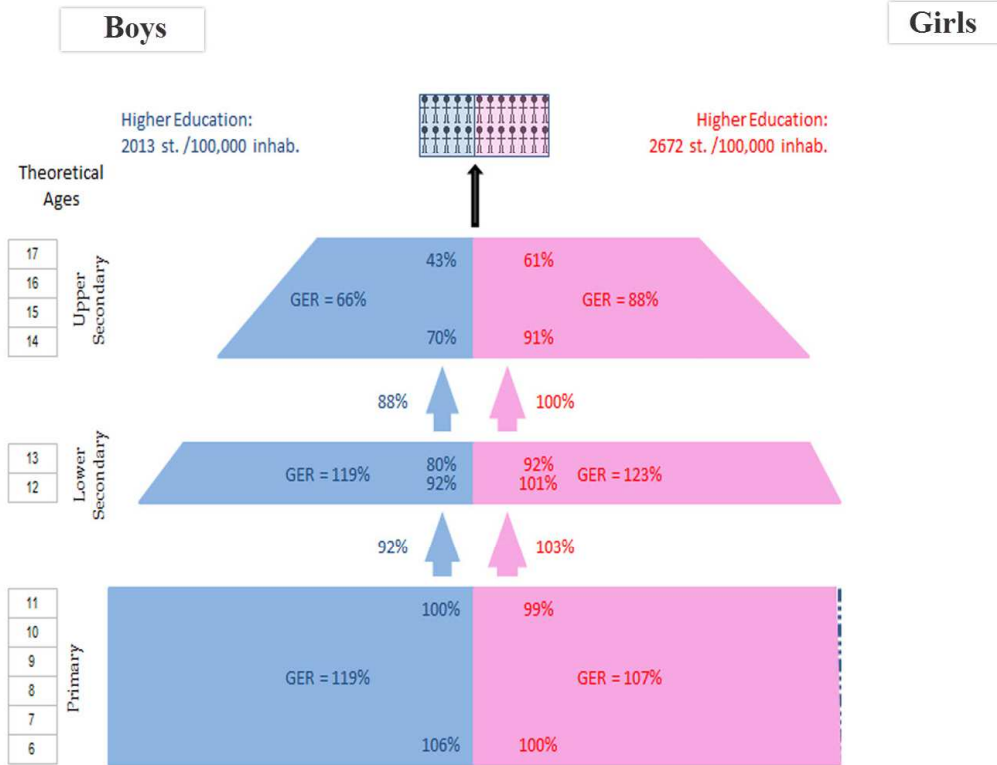
2011-2012



1999-2000



2011-2012



EDUCATIONAL PYRAMID BY WEALTH INDEX (QUINTILE)

2006-2007

