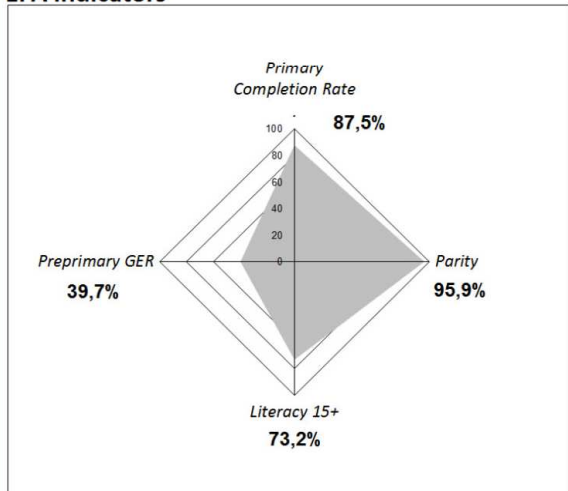


EFA African Development Index	72,7
Reminder 2000	58,1

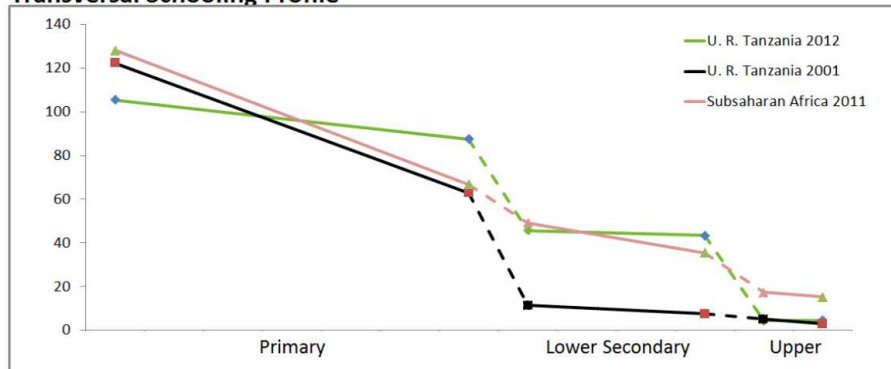
EFA indicators



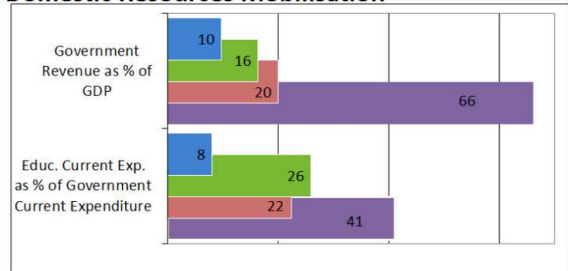
Demographic and Macroeconomic Context (2012)

GDP per Capita (U.S. \$)	636
Total population (000)	44 440
% of School Age Population (Primary)	18,5
Out of school rate for children of primary school age (%)	1,8
Adult (15-49) Living with HIV/AIDS	5,8%
HDI (Rank)	152/187

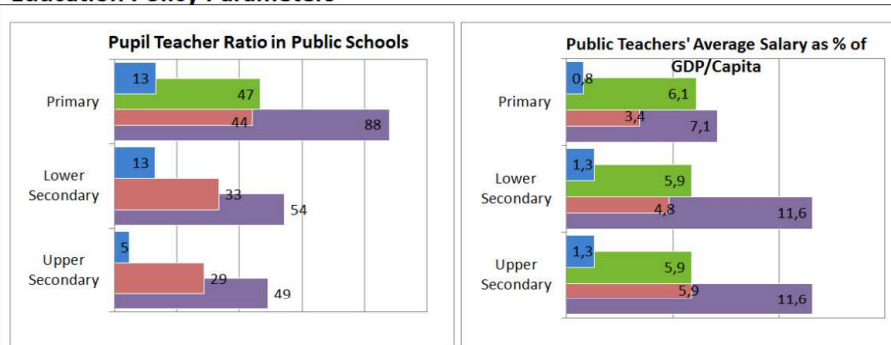
Transversal Schooling Profile



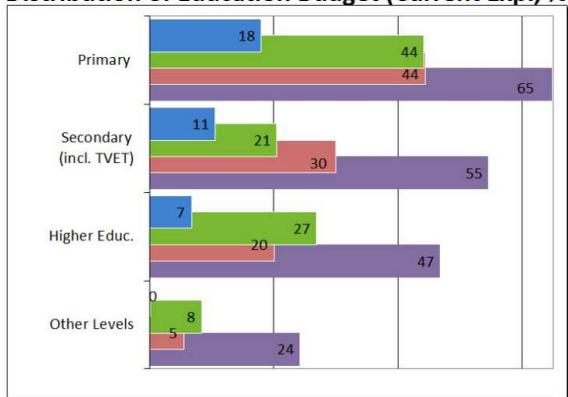
Domestic Resources Mobilisation



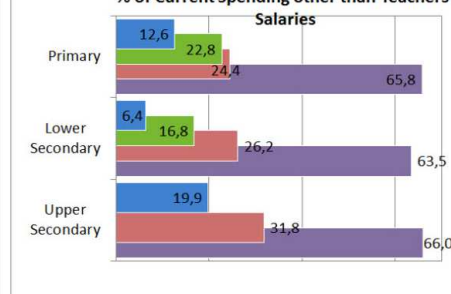
Education Policy Parameters



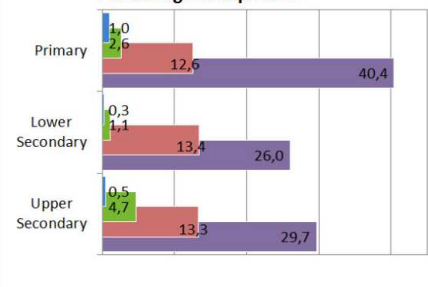
Distribution of Education Budget (Current Exp., %)



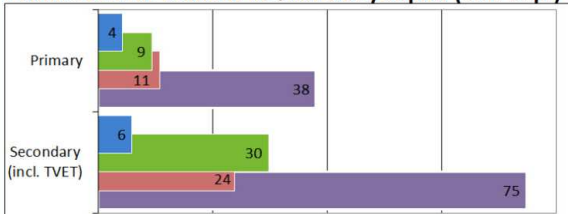
% of Current Spending other than Teachers' Salaries



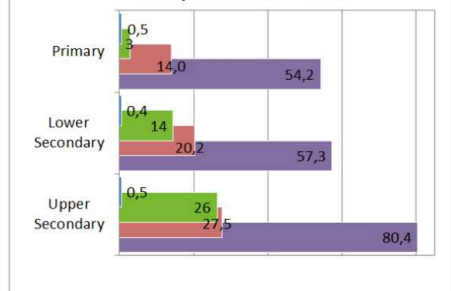
Percentage of Repeaters



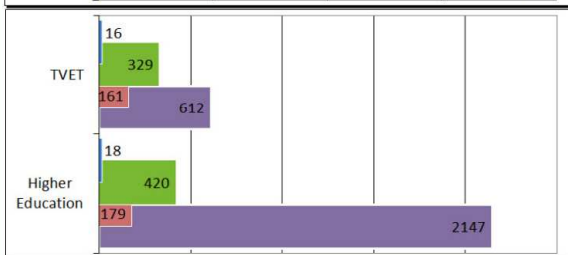
Public Cost Per Student as % of GDP/Capita (Cur. Exp.)



% of Pupils in Private Schools



Legend

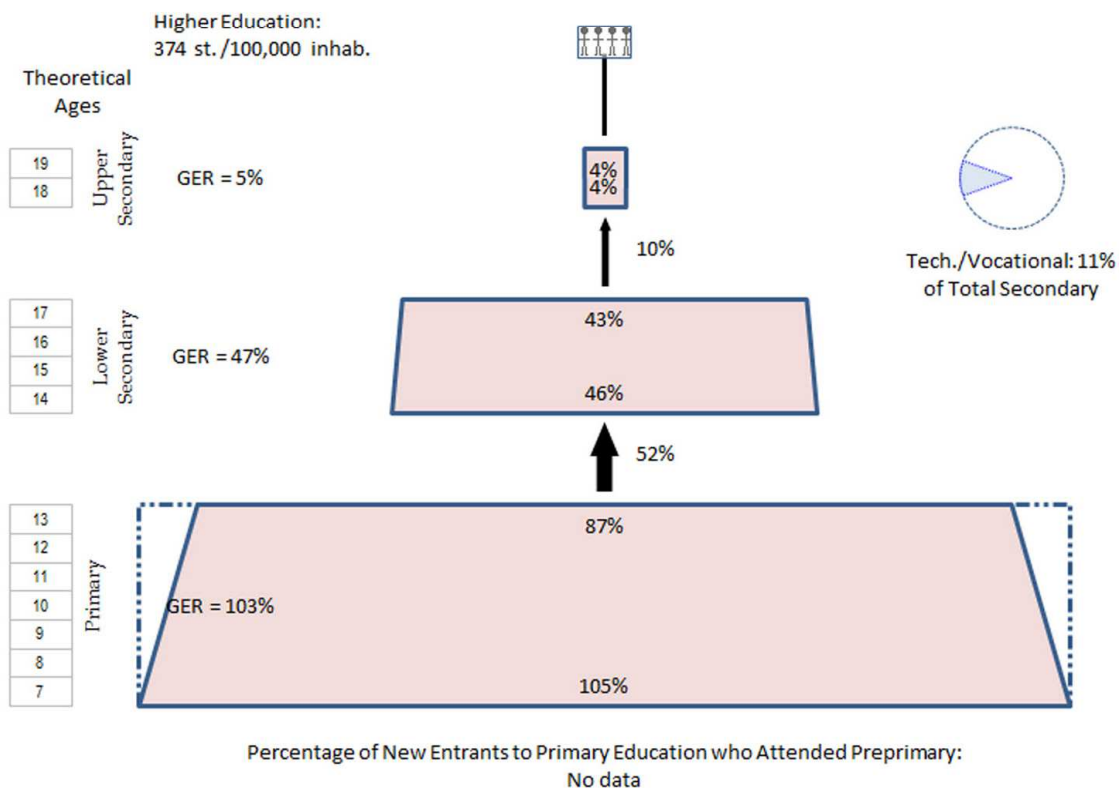


Year of Production of Financial Data

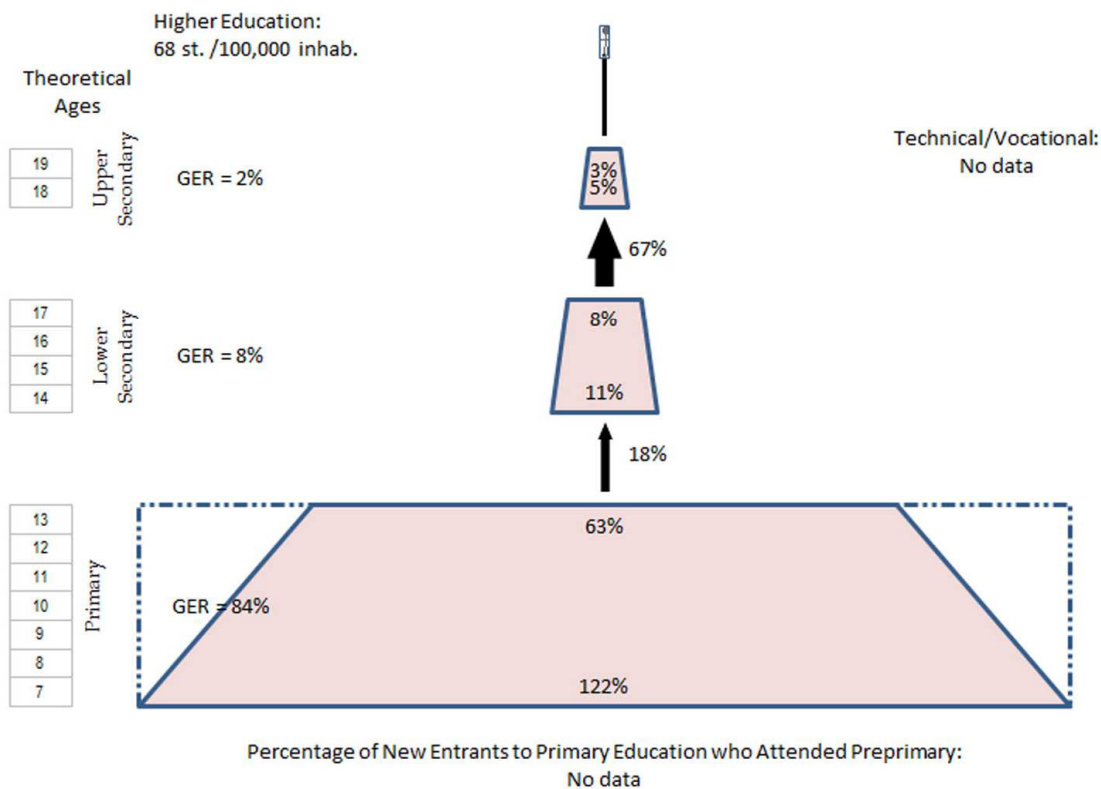
Domestic Resources Mobilisation	2010
Distribution of Education Budget	2009
Public Cost per Student as % of GDP per Capita (Current Exp.)	2009
Teachers' Salaries & other Current Spending	2009

Sources: Pôle de Dakar, UIS, World Bank, United Nations Population Division, UNAIDS, UNDP, IMF

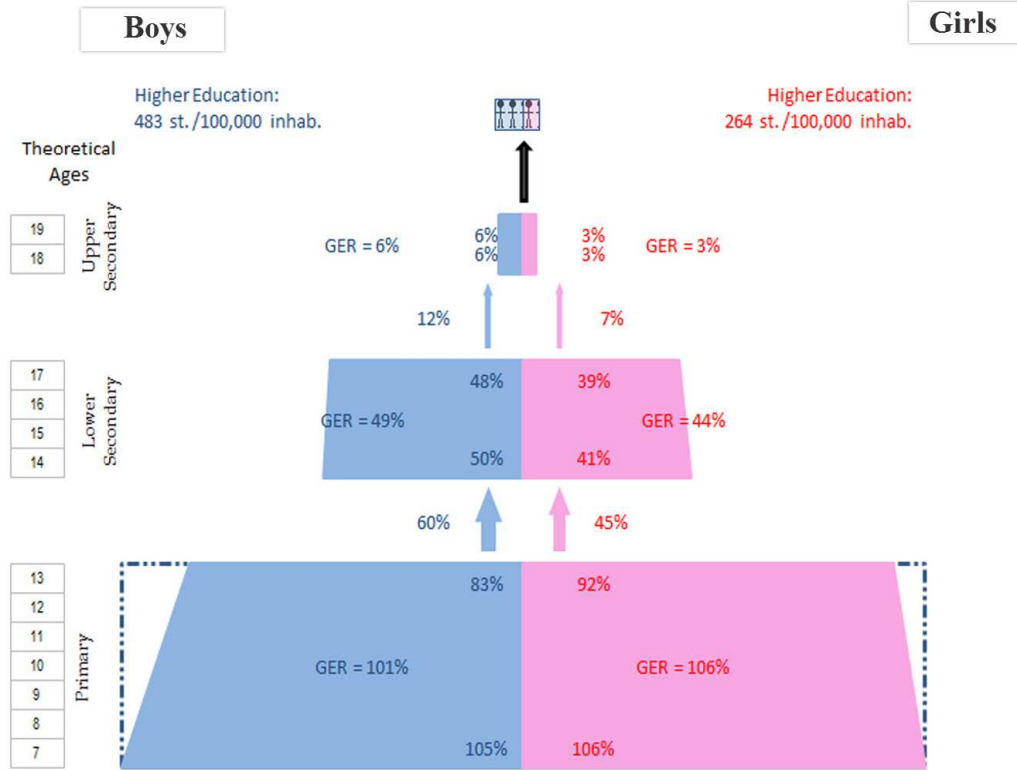
2012



2001



2012



EDUCATIONAL PYRAMID BY WEALTH INDEX (QUINTILE)

2007

